

## 9. DISASSEMBLY INSTRUCTIONS



1) Nokia E6-00 disassembly.



2) You must use the Nokia Standard Toolkit version 2. You will also need the AV plug and the DC plug.



3) Protect the TOUCH / WINDOW ASSEMBLY with protective film.



4) Open the release button.



5) Remove the BATTERY COVER. If there is a battery inside, remove it also.



6) Unscrew the two Torx+ size 4 screws. Do not use them again. Discard them.



7) Use the SS-93 to open the SD door.



8) Unscrew the first top Torx+ size 4 screw and remove it with tweezers.



9) Open the clips of END CAP with the SS-93.



10) Remove the END CAP with tweezers.



11) Unscrew the other top Torx+ size 4 screw and remove it with tweezers.



12) Use the SS-93 to lift up the DECO PLATE.



13) Remove the DECO PLATE with tweezers. Do not use it again. Discard it.



14) Unscrew the two Torx+ size 4 screws of the E-COVER. Do not use them again. Discard them.



15) Use the SS-93 to release the shown clips of the E-COVER.



16) Remove the E-COVER.



17) Lift up the WINDOW / TOUCH ASSEMBLY on the bottom side. Be careful not to damage the connector or components nearby!



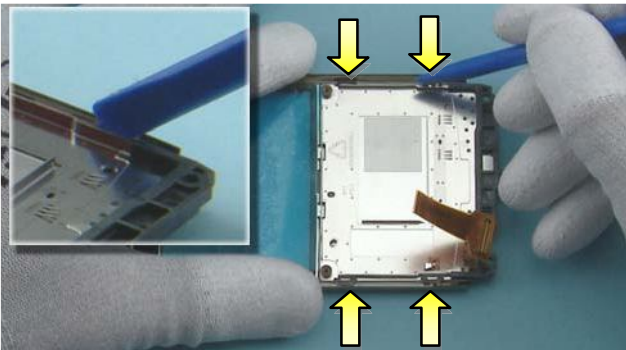
18) Open the WINDOW/ TOUCH ASSEMBLY connector. Be careful not to damage the connector or components nearby!



19) Open the touch panel connector and remove the WINDOW / TOUCH ASSEMBLY. Be careful not to damage the connector or components nearby!



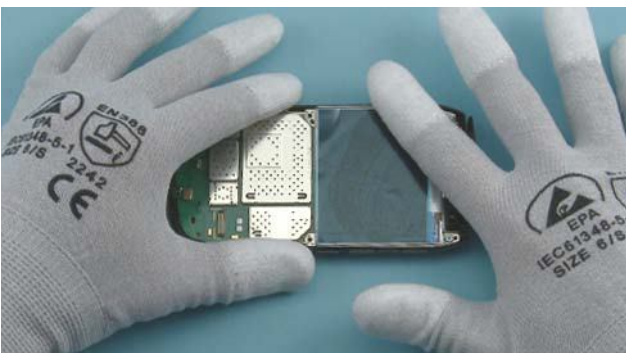
20) Protect the other side of the WINDOW / TOUCH ASSEMBLY with protective film.



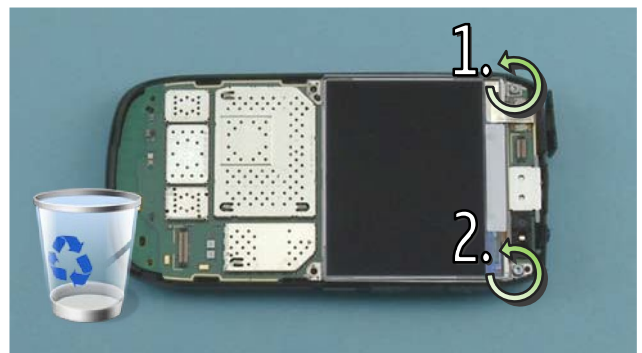
21) Open the two shown clips of the KEYMAT.



22) Remove the KEYMAT with tweezers.



23) Protect the display with protective film



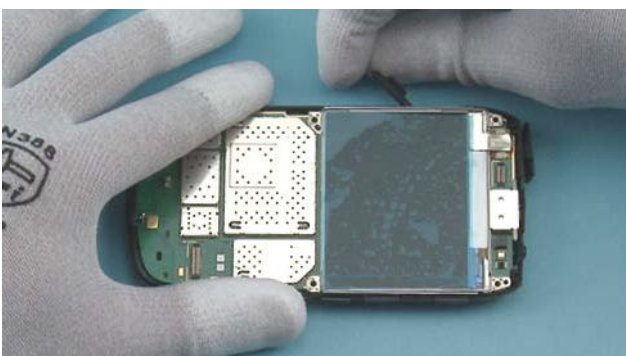
24) Unscrew the two Torx+ size 4 screws of the DISPLAY SUPPORT FRAME. Do not use them again. Discard them.



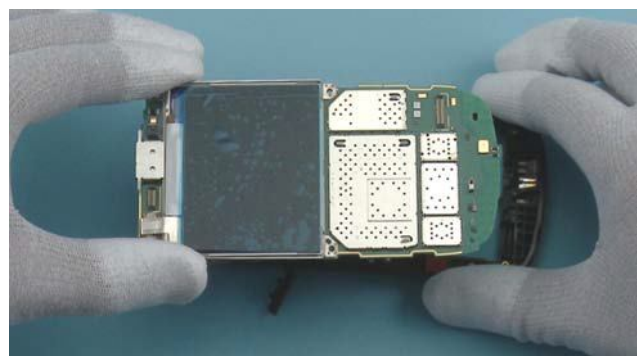
25) Remove the CAMERA BOOT with tweezers.



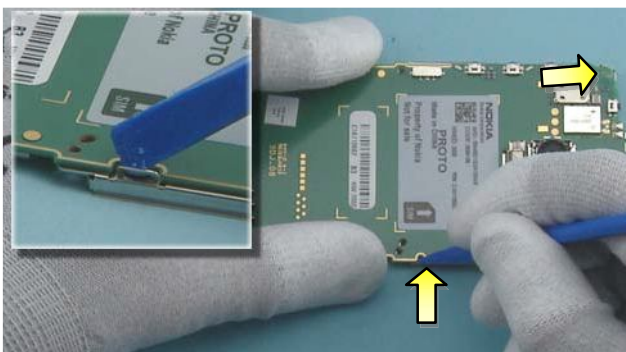
26) Push the SS-93 into the hole of the B-cover to release the ENGINE BOARD.



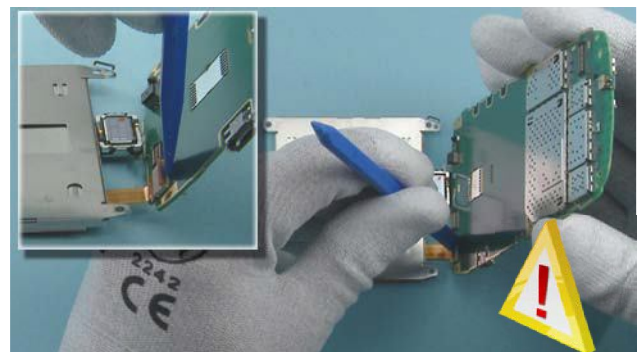
27) Open the USB DOOR.



28) Lift up the ENGINE BOARD.



29) Open the two shown clips of the DISPLAY SUPPORT FRAME.



30) Open the display connector and remove the ENGINE BOARD. Be careful not to damage the connector or components nearby!